

# HomeBridge Controller Setup to work with Fibaro HC2



*Attention: we do not recommend accessing the device via SSH or do any modifications with the SD card image by yourselves. We do not guarantee correct behavior afterward. Please contact our technical support in case of any issues.*

## Technical characteristics:

- CPU: Allwinner H2(+) quad-core Cortex A7 @ 1.2 GHz;
- GPU: Mali400MP2 GPU @600MHz with OpenGL ES 2.0;
- SDRAM - DDR3 512 MB (with GPU);
- Interfaces: 10/100M Ethernet RJ45;
- Indication: power LED, status LED;
- Manual controls: there is NO On/Off button;
- Power: 5 V/2 A via a USB connector.

## The package contains:

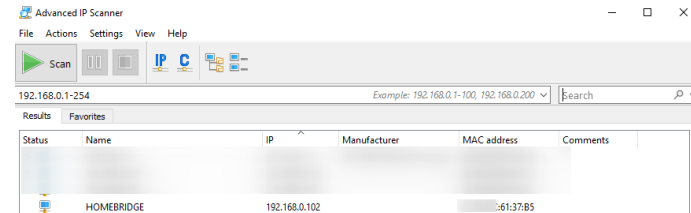
- HomeBridge Controller (Orange Pi Zero)
- 16GB SD card with the flashed image
- Power source
- Ethernet cable

## Setup

- 1) Connect HomeBridge Controller to your router, using Ethernet cable, which is in the box.
- 2) Wait for HomeBridge Controller to boot (about 3 minutes)

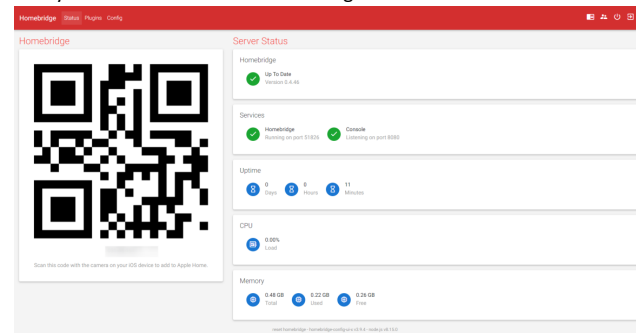
## HomeBridge Controller Web interface

- 1) To get access to the HomeBridge Web Interface you need to get the IP address of the HomeBridge Controller. You can do using these two methods:
  - a. Access the web interface of your router. Go to the DHCP clients list and look for HomeBridge:
  - b. Scan the local network using any suitable program. For example [Advanced Ip Scanner](#)



- 2) After you have found the IP address, open any web browser, that you have installed on your computer, and navigate to the IP address + port **8080** (this is the port, where Homebridge service is listening)  
Example1: 192.168.0.101:8080  
Example2: 192.168.1.42:8080
- 3) You should see the login page. The default login is **admin** and the default password is **admin**

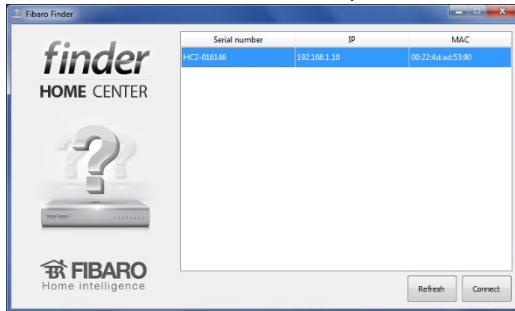
Now you have access to the HomeBridge Web interface



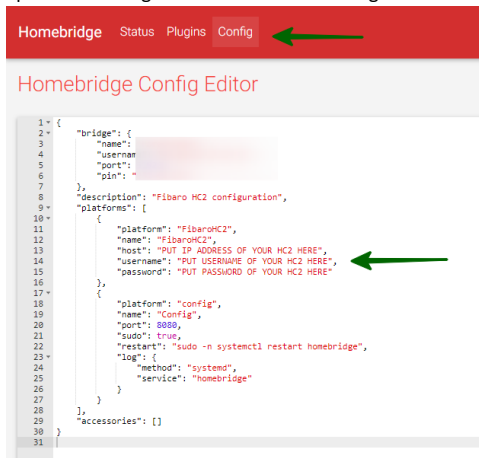
## Configure HomeBridge to work with Fibaro HC2

Once you have access to HomeBridge Web interface, you need to configure access details for your Fibaro HC2.

- 1) Find the IP address of the Fibaro HC2 in your local network. You can do it using [Fibaro Finder](#)



- 2) Open HomeBridge Web Interface and navigate to the **Config** screen

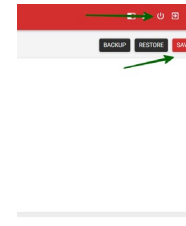


- 3) Locate the section for Fibaro HC2

```
"platforms": [  
  {  
    "platform": "FibaroHC2",  
    "name": "FibaroHC2",  
    "host": "PUT IP ADDRESS OF YOUR HC2 HERE",  
    "username": "PUT USERNAME OF YOUR HC2 HERE",  
    "password": "PUT PASSWORD OF YOUR HC2 HERE",  
  }  
]
```

- 4) In the field **host** enter Fibaro HC2 IP address

- 5) In the field **username** enter your login for Fibaro HC2 (ATTENTION: it is safer to create a separate user specifically for HomeBridge and give him rights to control specific rooms/devices)
- 6) In the field **password** enter your password for Fibaro HC2 (ATTENTION: it is safer to create a separate user specifically for HomeBridge and give him rights to control specific rooms/devices)
- 7) Save new **Config** and restart HomeBridge



## Connect HomeBridge Controller to iOS devices

- 1) Launch app **Home** on your iPhone or iPad
- 2) Add new device
- 3) Scan the QR code, which you can see in the HomeBridge Controller Web Interface
- 4) Enter the PIN code, which you can see in the HomeBridge Controller Web Interface

## Setup remote access

- 1) To setup remote access you need to configure a Home Hub, which can be: Apple iPad, Apple TV or Apple HomePod
- 2) Detailed instruction on how to do this you can find on Apple Web Site: <https://support.apple.com/en-us/HT207057>